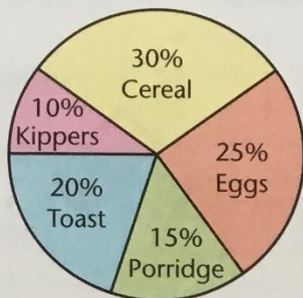


This pie chart shows the favourite breakfast of 60 Year 6 pupils.



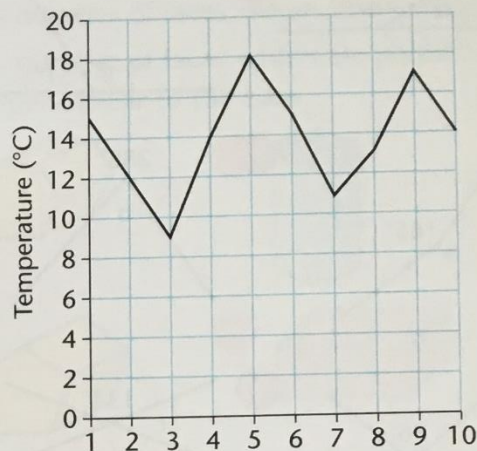
- How many children chose each breakfast?
- Work out the angle at the centre of each sector.
- This table shows the audience in a cinema.

Women	120
Men	75
Girls	60
Boys	45

Construct a pie chart to show the data.

- Draw a graph to convert miles to kilometres.
 - Label the horizontal axis (miles) in 5s to 50.
 - Label the vertical axis (kilometres) in 5s to 80.
 - Draw a straight line to connect (0, 0) and (50, 80).
- Use your graph to convert to the nearest kilometre:
 - 25 miles
 - 10 miles
 - 45 miles.
- Use your graph to convert to the nearest mile:
 - 8 km
 - 64 km
 - 20 km.

This line graph shows the daily maximum temperature recorded for the first 10 days of May.



- What was the temperature on:
 - 5th May
 - 7th May?
- On which two days was the temperature:
 - 14°C
 - 15°C?
- By how much did the temperature
 - rise between 8th May and 9th May
 - fall between 2nd May and 3rd May
- Between which two days was there:
 - the largest fall in temperature
 - the largest rise in temperature?
- Find the mean temperature for the first 10 days of May.
- Use the table below to draw a line graph showing the daily maximum temperature for one week in January.

Day	Su	M	Tu	W	Th	F	Sa
Temp (°C)	8	5	-1	-3	1	0	4
- Find the mean temperature for the above week.